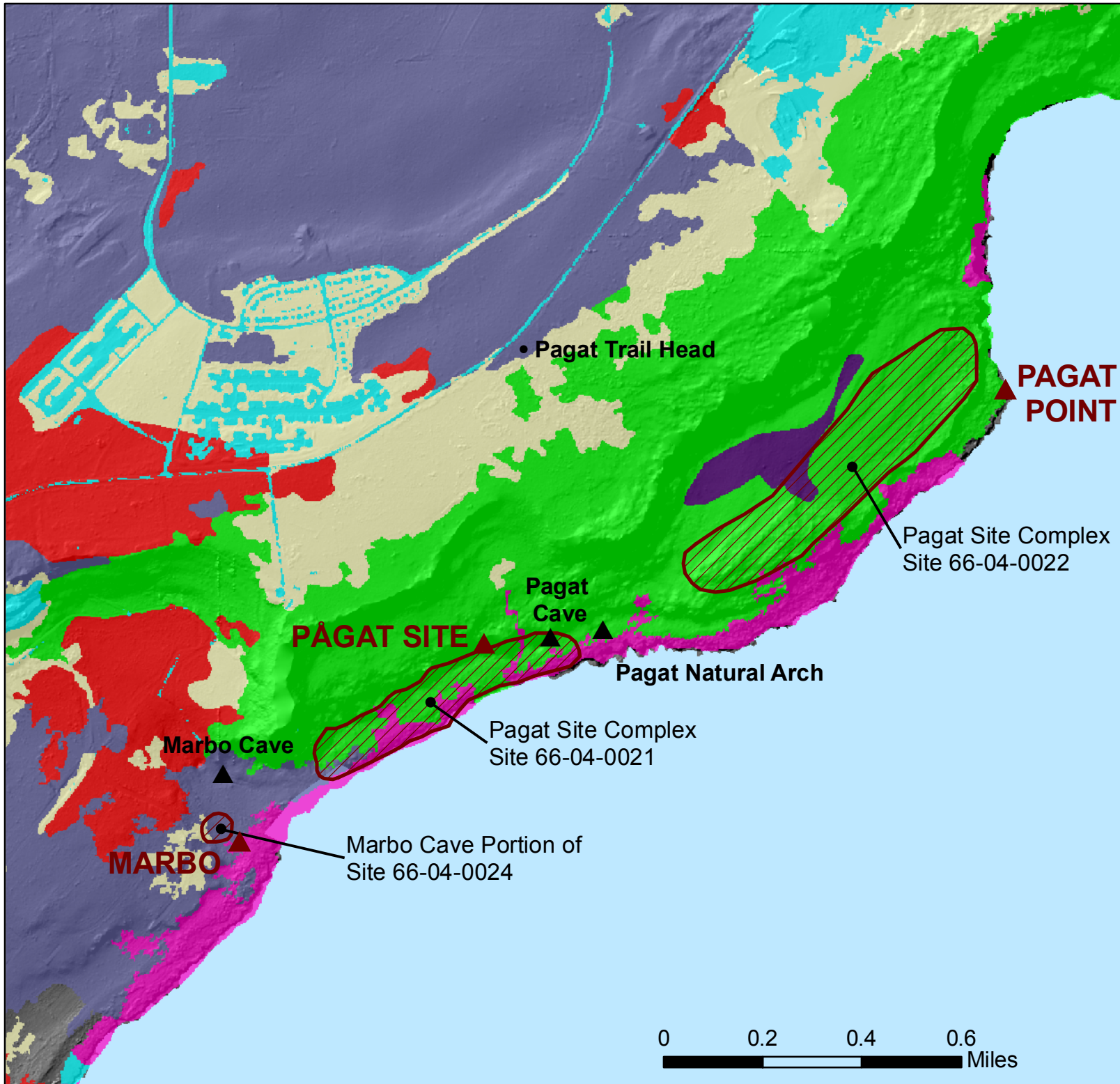


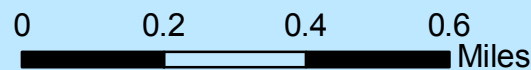
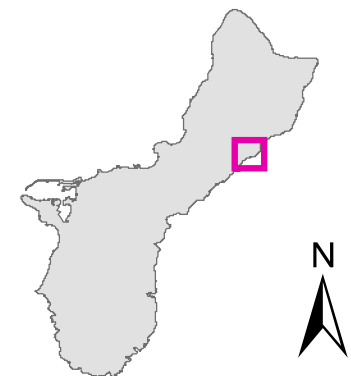
Known Cultural Resources at Historic Pāgat Village



- ▲ Historic site
- ▲ Caves
- ⊕ Potential TCP
- Coconut Plantation
- Leucaena Stand
- Limestone Forest
- Urban Cultivated
- Scrub Forest
- Strand Vegetation
- Urban Buildup

Vegetation Layer from U.S. Forestry

To the best of our knowledge, no comprehensive archaeological survey of this area has been conducted. Therefore this map does not contain an exhaustive denotation of the significant cultural properties at the Pāgat village site.



Map prepared by
Guam Preservation Trust
November 2010